

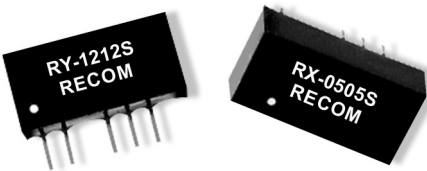
# ECONOLINE - DC/DC-Converter

RX and RY Series, 1 Watt, DIP14/SIP7, Regulated (Single Output)

RECOM

### Features

- Load Voltage Regulation <1.5%
- Controllable Output
- 1kVDC Isolation
- SIP & DIP Package Styles
- UL 94V-0 Package Material
- No Heatsink Required
- Toroidal Magnetics
- Fully Encapsulated

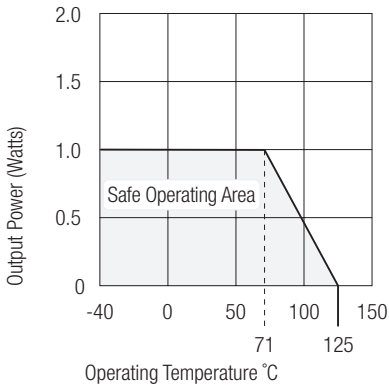


### Selection Guide

Part Number DIP14	Part Number SIP7	Input Voltage (VDC)	Output Voltage (VDC)	Output Current (mA)	Efficiency (%)
RX-XX05S	RY-XX05S	5, 9, 12, 15, 24	5	180	58-60
RX-XX09S	RY-XX09S	5, 9, 12, 15, 24	9	111	56-62
RX-XX12S	RY-XX12S	5, 9, 12, 15, 24	12	84	60-66
RX-XX15S	RY-XX15S	5, 9, 12, 15, 24	15	66	60-66
RX-XX24S	RY-XX24S	5, 9, 12, 15, 24	24	42	60-68

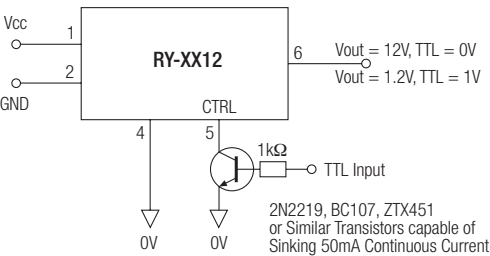
### Specifications (Core Operating Area) and Operating Temperature / Derating-Graph

Input Voltage	±5%
Input Filter	Capacitor Type
Output Voltage Accuracy	±5%
Line Voltage Regulation	±1%
Load Voltage Regulation (10% to 100% full load)	±1%
Ripple and Noise Output	100mVp-p max.
Efficiency at Full Load	50% min.
Isolation Voltage	1.000VDC min.
Isolation Resistance (Viso = 500VDC)	10 GΩ min.
Isolation Capacitance	30pF min./150pF max.
Short Circuit Protection	1 Second
Switching Frequency at Full Load	30kHz min. / 88kHz max.
Operating Temperature	-40°C to +71°C (see Graph)
Storage Temperature	-55°C to +125°C
Package Weight	RX types 2.9g RY types 2.8g

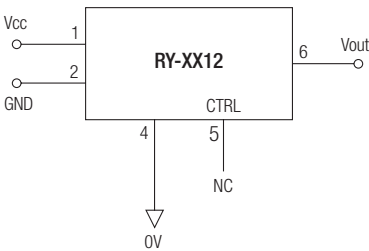


### Typical Applications

#### Flash PROM Programming Voltage Control



#### Normal Isolated Regulated Output



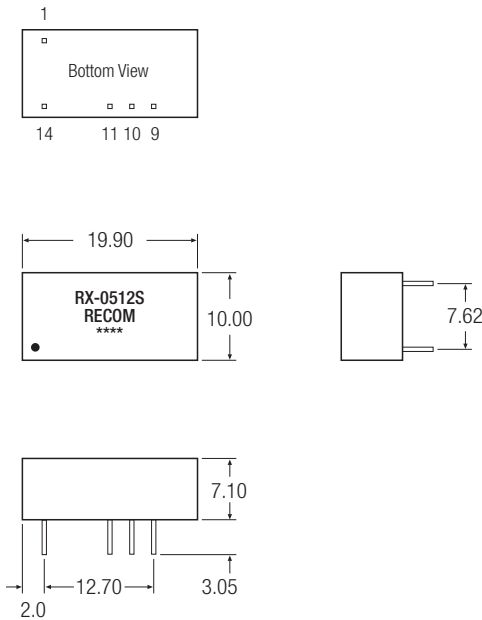
# ECONOLINE - DC/DC-Converter

RX and RY Series, 1 Watt, DIP14/SIP7, Regulated (Single Output)

RECOM

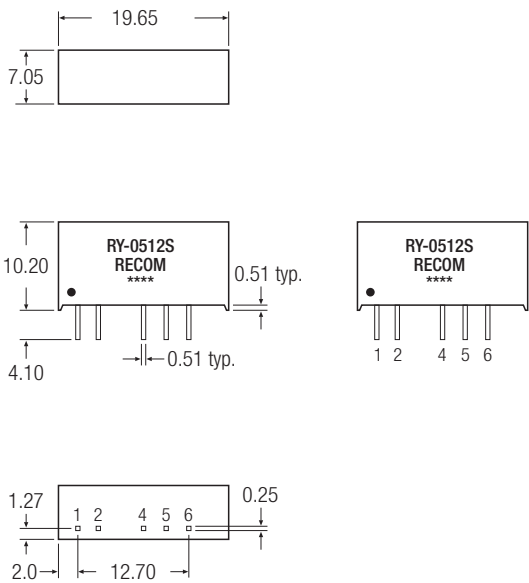
## Package Style and Pinning (mm)

### 8 PIN DIP Package

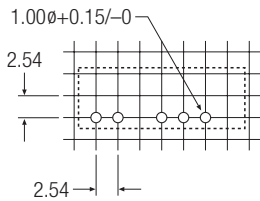
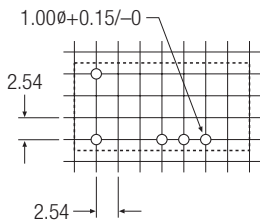


### 7 PIN SIP Package

3rd angle projection



### Recommended Footprint Details



### Pin Connections

Pin #	RX	RY
1	-Vin	+Vin
2	No Pin	-Vin
4	No Pin	-Vout
5	No Pin	CTRL
6	No Pin	+Vout
9	+Vout	No Pin
10	CTRL	No Pin
11	-Vout	No Pin
14	+Vin	No Pin

XX.X ± 0.5 mm  
XX.XX ± 0.25 mm